

# News & Events

DECEMBER 2010



## PumpMate™ 2000 Rev. K



The PumpMate 2000 has gone through a radical change with the Rev. K upgrade. Having been in service since 1992, many of its electronic components have reached their “End of Life.” The most critical component, the microprocessor, will simply not be available for purchase in 2011. Change was inevitable in order to continue servicing the product changes that bring it up to date with the new, re-packaged PumpMate 2010 product features and user interface.

The Rev. K upgrade provides full “drop-in” compatibility with the PumpMate 2000 enclosure, 4x D-cell battery holder and all I/O hookup terminals. It also uses the Integrated Device Manager™ (IDM) utility and OpSys operating system to provide far greater flexibility than any other available wellhead controller.

**Drop-In Replacement**

Control panel key layout is the most noticeable change. The 10x key pad is replaced by an 8x key pad arrangement to make it simpler to use and more intuitive. The AUX (auxiliary) and PWR (power) keys are new additions. Customizable display menus and submenus replace a more complicated keypad arrangement.

**Simple Keypad Array**



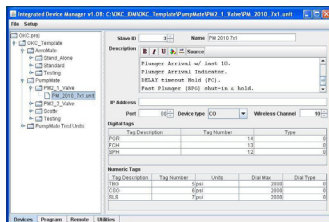
**More Battery Capacity**

The battery holder remains the same on the Rev. K upgrade with one significant difference. The Rev. K upgrade uses all four rechargeable D-cell batteries. The top and bottom pairs of 2x D-cell batteries are fully utilized for rechargeable D-cell batteries. Both solar and external power inputs are provided.

**Sensor Measurement**

Sensor measurement has been updated in the Rev.K upgrade panel to allow use of pressure and flow sensors with excitation voltages as high as +10 Vdc. User settable sensor scaling accommodates any sensor output scale and full scale range for +5 Vdc output sensors. Stable, precise readings enhance digital switch gage applications.

**Complete Customization**



OKC’s free on-line Integrated Device Manager™ (IDM) application includes a Display Manager utility that allows customization of the Rev.K upgrade panel’s LCD displays and menus. Combined with the IDM application’s Program utility, the Rev.K upgrade panel can be completely customized to meet any specific user’s application requirements or control methodology.