

# TRIPMATE™

**Strap-On Plunger Arrival Sensor**  
9202-2021000 or 9201-2021600



## FEATURES

- ▶ **Easy Installation**  
*strap-on hold down*
- ▶ **Small Package Size**  
*narrow body case*
- ▶ **Easy Hook Up**  
*2-wire terminals*
- ▶ **MagCharge™ Powered**  
*long battery life*
- ▶ **Deep Penetrating**  
*high strength magnet*
- ▶ **Long Term Reliability**  
*epoxy sealed unit*
- ▶ **High Powered Switch**  
*30 volts at 2 amperes*
- ▶ **Intrinsically Safe**  
*CSA approved*
- ▶ **Resists Chemicals**  
*carefree operation*

## APPLICATIONS

- ▶ **Plunger / Gas Lift**
- ▶ **Stroke Counter**
- ▶ **Proximity Sensing**
- ▶ **Automation Sensor**
- ▶ **Piston Timing**
- ▶ **Tank Level Control**
- ▶ **Plunger Arrival**
- ▶ **Magnetic Shut-Off**

**Magnetic induction switch** penetrates through metal and non-metal materials to sense metal objects moving past the switch. Rugged and durable, the TripMate™ magnetic shut-off switch is the perfect solution for industrial applications that require plunger arrival sensing, piston stroke counting or tank level gauging.

**Simple installation** saves time and money. The TripMate's narrow body package fits into those hard to get to places. A UV resistant rubber hold-down secures the TripMate to the well head pipe. Connect to the switch screw terminals to complete a simple, two-step installation.

**Self powered** with internal lithium batteries, the TripMate provides long term operation in all weather extremes and eliminates the need for an external power source. The TripMate's proprietary MagCharge™ power system generates and stores power to extend battery life with every magnetic sensing event. The harder it works, the longer it lasts.

**Ideal switch** configuration allows both high-side and low-side power switching for latching pneumatic valve and electrical relay control. Electrical isolation between internal sensing circuits and switch terminals provides ideal, low loss switch for low voltage, pull-down and pull-up control signal applications. A high current switch rating, low on resistance, and electrical isolation combine to provide an extremely versatile arrival switch, meeting a wide range of industrial control applications.



**MagCharge™ Powered**  
*Long term, carefree operation*  
**"The harder it works, the longer it lasts."**

**Carefree** operation And long term reliability set the TripMate apart from other magnetic switches. Impermeable epoxy sealing and electrically isolated switch connections protect against harsh weather and lightning. Ultra low power electronics significantly reduce failure rates and provide intrinsically safe operation. Rugged packaging is made to last and give years of continuous performance in harsh weather conditions. The TripMate's chemical resistant, molded enclosure keeps the TripMate looking new even after years of oilfield service.

# TRIPMATE™



**P/N 9202-2021000 (without shroud) or P/N 9202-2021600 (with shroud)**  
 With its universal 2-wire hookup, the TripMate is compatible with most popular well head controllers, including the PumpMate, AeroMate, or TimeMate.



## TripMate™ Specifications

Manufactured under U.S. Patents 6,194,793 B1 and 6,462,507 B2

### Enclosure

Weight	8 ounces (0.23 kg)
Dimensions	2.4 W x 1.4 H x 1.3 D (inches) (6.1 cm x 3.6 cm x 3.3 cm)
Type	High Impact, Black Molded Thermoplastic

### Power

Type	Internal, Sealed Lithium Battery
Recharge	Inductive MagCharge™ Power Conversion
Life	7 Years or More

### Hook-Up

Type	Two-Wire Switch 1. Signal (+) 2. Ground (-)
Terminals	#6-32 Stainless Steel with Spade Lugs Provided
Cable	#22 AWG 2-Conductor 500 ft Max. Length 6 ft Black Molded Cable Provided with a White Signal (+) Wire Marker

### Electrical

Output	Normally Open, Single Pole, Electrically Isolated Switch
Rating	30 Volts at 2 Amperes Less than 0.1 ohm On Resistance

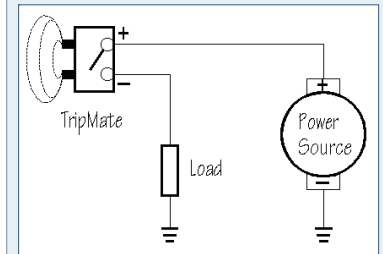
### Operational

Method	Utilizes Magnetic Induction to Sense Metal Object Moving Past Sensor Through Metal or Non-Metal Interfaces
Signal	Switch Closure Duration Proportional to Speed of Passing Object
Mounting	Physical Contact with Sensing Interface. Hold Down Using Clamp, Cable Tie, or Rubber O-Ring Band.

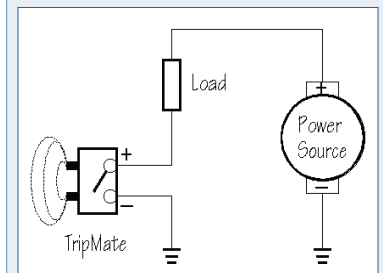
### Certifications

CSA	Non-Incendive — Intrinsically Safe for Use in Class I, Groups C and D Hazardous Locations
-----	---

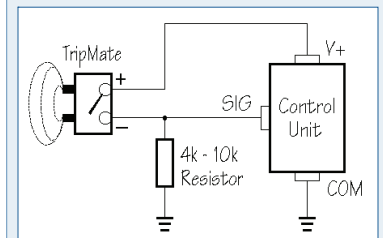
### High-Side Power Switch



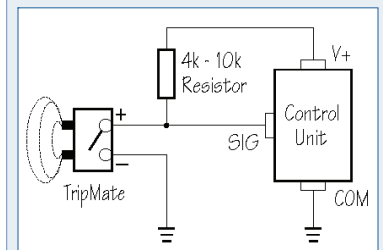
### Low-Side Power Switch



### Pull-Down Control Signal



### Pull-Up Control Signal



OKC Products, Inc.

P.O. Box 1560  
 Berthoud, CO 80513 USA  
 p 970.532.1773 f 970.532.1776  
[www.okcproducts.com](http://www.okcproducts.com)